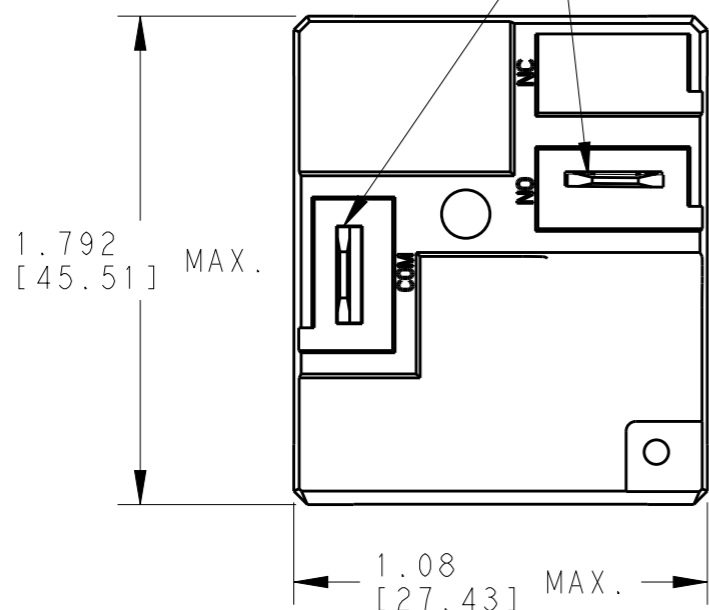


LOC HB DIST 00

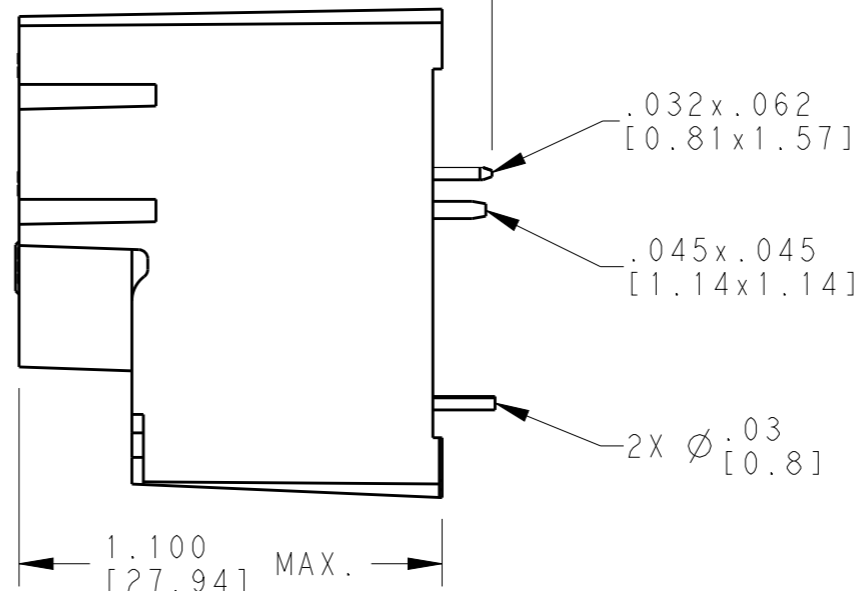
REVISIONS

P	LTR	DESCRIPTION	DATE	DWN	APVD
F		ECR-10-018145	03NOV2010	SPN	GK
G		CHANGE TE LOGO, ECO-12-005755	24AUG2012	HL.C	BH.Y

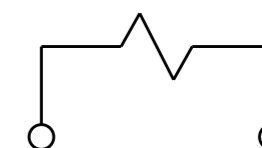
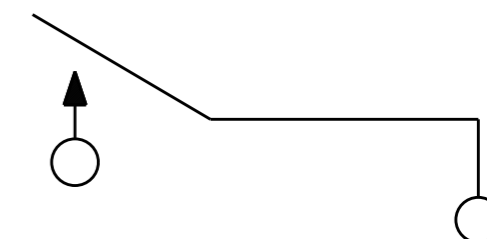
.250x.032  
[6.35x0.81] QUICK CONNECT TERM.



.130±.020  
[3.3±0.51]



WIRING DIAGRAM  
(BOTTOM VIEW)

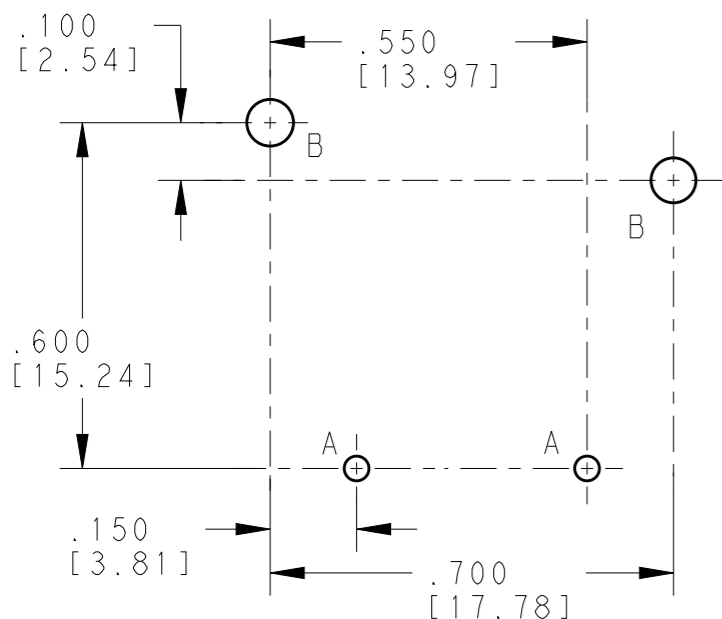


1 FORM A

HOLE CHART

A- Ø .043±.003  
[1.09±0.08]

B- Ø .081  
[2.06]



PC BOARD LAYOUT  
(BOTTOM VIEW)

ELECTRICAL CHARACTERISTICS

NOMINAL VOLTAGE: 12VDC  
 OPERATE VOLTAGE: 9VDC  
 DROPOUT VOLTAGE: 1.2VDC MIN.  
 COIL RESISTANCE: 144 OHMS ±10%  
 CONTACT ARRANGEMENT: 1 FORM A (SPST)  
 CONTACT MATERIAL: SILVER CADMIUM OXIDE  
 CONTACT RATING: 30A @ 240 VAC, NO CONTACT

BREAKDOWN: 1554V RMS 60Hz ACROSS OPEN CONTACTS  
 2500V RMS 60Hz BETWEEN CONTACTS AND COIL  
 6KV SURGE USING 1.2 MICROSEC. / 50 MICROSEC. IMPULSE WAVE OR  
 .5 MICROSEC. -100KHz RING WAVE BETWEEN CONTACTS AND COIL.

STORAGE TEMPERATURE RANGE: -55°C TO +130°C  
 OPERATE TEMPERATURE RANGE: -55°C TO +105°C\*\*

TE PART NO.  
1-1419104-7

THIS DRAWING IS A CONTROLLED DOCUMENT.		DWN J. SLIKE 09FEB2010	<b>STE</b> TE Connectivity	
DIMENSIONS: INCH [mm]		CHK G. KOPPENHEFFER 09FEB2010		
TOLERANCES UNLESS OTHERWISE SPECIFIED:		APVD G. KOPPENHEFFER 09FEB2010	NAME RELAY, PC, SEALED	
0 PLC ±-		PRODUCT SPEC -	SIZE	
1 PLC ±-		APPLICATION SPEC -	CAGE CODE	
2 PLC ±.01[0.25]		WEIGHT -	DRAWING NO	
3 PLC ±.005[0.13]		Customer Drawing	A300779	
4 PLC ±-		SCALE 2:1	G-T9AS1D22-12	
ANGLES ±-		SHEET 1 OF 1	RESTRICTED TO -	
FINISH -		REV G		